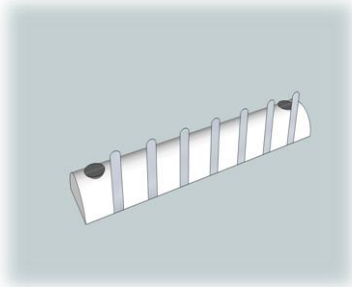


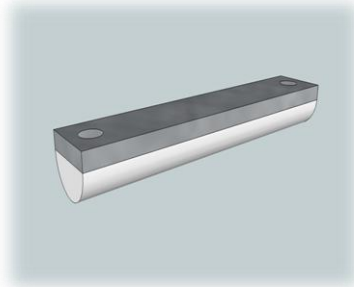


PRODUCTION FASTENING SYSTEMS, L.L.C.

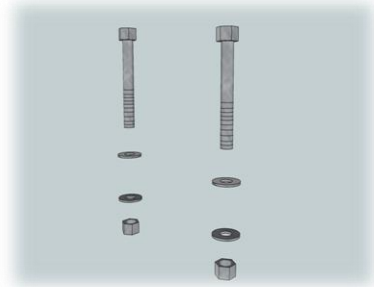
NEW ORLEANS, LA



Spacer Alignment Section
(Bottom)



Top Retainer



Hardware

To install T-SEP Assembly

- Surface Preparation

Surface should be clean of oils, solvents, water or any other debris that would hinder adhesive to bond to the surface.

- Spacer Alignment Section

Once spacer alignment section is bonded to surface it may be difficult to remove, therefore spacer alignment section should be planned, in- place before spacer alignment section is applied with adhesive backing.

Please note- this bonding is to be used as a temporary hold until the top retainer and hardware is installed after tubing. Some top retainers & hardware should be installed to secure tubing until tube run is complete.

- Tubing

Spacers are manufactured of .030 gauge SS316 material. This thickness is designed to separate the tube with minimal contact. It is best not to install and remove tubing for measurement once tubes are installed into the separate tines.

- Top Retainer & Hardware

Spacer tubes should not be removed as to not bend spacers out of alignment. After tubing is installed into the spacer alignment section, top retainer and hardware should be installed to reduce pressure on temporary adhesive on the spacer alignment section.

SERVING THE OFFSHORE, INDUSTRIAL AND SHIPBUILDING INDUSTRIES SINCE 1987